

# Digital Portable X-Ray Solution

with Dry Printing Bundle (DPX50-14G1-18)

## Portable X-Ray

Max Output Power:	5.0 kW
Input Power:	
Voltage:	200-240V
Phase & Frequency:	Single / 50/60 Hz
Radiography kV Range in 1kV steps (50kV ~ 110kV)	
Tube Voltage	Current    mAs
50kV	100mA    0.4~10mAs
50kV	80mA     13~32mAs
50kV	70mA     40~100mAs
51kV ~ 60kV	80mA     0.4 ~ 10mAs
51kV ~ 60kV	70mA     13 ~ 32mAs
51kV ~ 60kV	60mA     40 ~ 100mAs
61kV ~ 70kV	70mA     0.4 ~ 10mAs
61kV ~ 70kV	60mA     13 ~ 32mAs
61kV ~ 70kV	50mA     40 ~ 100mAs
71kV ~ 80kV	60mA     0.4 ~ 10mAs
71kV ~ 80kV	50mA     13 ~ 32mAs
71kV ~ 80kV	40mA     40 ~ 100mAs
81kV ~ 90kV	50mA     0.4 ~ 10mAs
81kV ~ 90kV	40mA     13 ~ 32mAs
81kV ~ 90kV	30mA     40 ~ 100mAs
91kV ~ 100kV	45mA     0.4 ~ 10mAs
91kV ~ 100kV	40mA     13 ~ 32mAs
91kV ~ 100kV	30mA     40 ~ 100mAs
101kV ~ 110kV	40mA     0.4 ~ 10mAs
101kV ~ 110kV	30mA     13 ~ 32mAs
101kV ~ 110kV	20mA     40 ~ 100mAs
MAs Range:	0.4mAs - 100mAs
Max. kV Deviation:	±3%
Max. mAs Deviation:	±5%
Max. Reproducibility of the RADIATION output:	Coefficient of variation: < 0.02
Display:	kV /mAs: 7-segment LED
Focal Spot:	1.8 mm x 1.8 mm
Target Angle:	15 degree
Anode Heat Storage:	42 kHU
Total Filtration:	
Tube: 0.5 mmAl / collimator: 0.5 mmAl / filter: 2.0 mmAl	
3.0 mm Al eq. @ 75 kV	
Collimator with Laser Pointer:	
Type:	Double slit type, manual operation
Min. X-ray Field Size:	0 cm x 0 cm @ 100 cm SID
Max X-ray Field Size:	43 cm x 43 cm @ 100 cm SID
Laser Pointer:	Class II
Timer:	Push button illuminator with 30 sec timer
Lamp:	LED 3.0V, 3A, 10W
Weight:	13 Kg
Regulatory:	Full medical device compliance including Class II FDA and Class IIb MDD-CE 93/42/EEC, GMP/QSR, ISO 13485:2016, 60601-1:2006/A1:2013, 60601-1-3:2008, 60601-1-6:2010, EN62366:2008, 60601-2-28:2010, 60601-2-54:2009 Safety, 60601-1-2: 2007 EMC, ISO 14971:2012/AC:2012, EN980:2008, EN1041:2008, EN62304:2006, MEDDEV2.11.1/Rev.8, MEDDEV 2.12.2/Rev.2 OTHERS, and MEDDEV 2.7.1/Rev.4 CLINICAL EVALUATION for Healthcare Facilities

## Portable Cart

Weight:	75 Kg
Dimensions:	1360 x 630 x 630 mm

## Console Software

- Image acquisition
- Detector calibration
- Gridline suppression (for static grids with 40 lines/cm and 43 lines/cm)
- AIP (Advanced Image Processing)
- DICOM Store and Storage Commit
- DICOM Print
- DICOM Modality Worklist (MWL) / Modality Performed Procedure Steps (MPPS)
- DICOM viewer
- Auto window level
- Measurements and annotation
- Patient CD
- Mini PACS
- Manual stitching for long film (Automated stitching optional)
- Multi detector support (optional, up to 3 FPD)
- Flyviewer (Tablet support)

## Wireless Cassettes

(multiple configurations available)

Detector Technology:	Amorphous Silicon
Scintillator:	CSI (Cesium Iodide)
Active Area:	14x17: 345.6mm x 420mm 17x17: 427mm x 427mm
Pixel Pitch:	14x17: 150 µm; 17x17: 139 µm
Number of Pixels:	14x17: 2304 x 2800 17x17: 3072 x 3072
AD Conversion:	16bits
Cycle Time:	8s
Data Interface/Detector:	WiFi (802.11ac)/Ethernet
Control Trigger Mode:	i-Sync 2 (Auto Exposure Detection) Software
Wireless Mode:	2.4G/5G, with internal AP
Battery:	5h (Full performance)
Charging Time:	≤3h
Shock Tolerance:	High
Water Proof:	IPX1
Limiting Resolution:	14x17: 3.3 lp/mm; 17x17: 3.6 lp/mm
Accessories:	Charging dock, adapter, cables, 2 batteries
Operating Temperature:	5 - 35°C
Storage Temperature:	-20 - 55°C
Operating Humidity:	10 - 90%
Storage Humidity:	5 - 95%
Dimension:	14x17: 384 x 460 x 15mm 17x17: 460 x 460 x 15.1mm 14x17: 3.6kg; 17x17: 4.6kg
Weight:	14x17: 3.6kg; 17x17: 4.6kg
Power Consumption:	Max.15W (Full performance)
Adapter:	AC input: 110-240V, 50-60Hz
Regulatory:	Medical device compliance Class IIb MDD-CE 93/42/EEC, GMP/QSR, EN ISO 13485:2016, IEC 60601-1 Safety & IEC 60601-1-2 EMC/EMI and FCC Class B for Healthcare Facilities (1417V3-TSI FCC 2ACHK-02112031 & 1717V3-VSI FCC 2ACHK-02110113)

## Imager

(multiple configurations available)

Print Technology:	Direct thermal (dry, daylight safe operation)
Spatial Resolution:	320 DPI (12.6 pixels/mm)
Throughput:	Up to 100 films per hour
Time To Operate:	5 minutes (ready to print from "off")
Grayscale Contrast Resolution:	12 bits (4096)
Media Inputs:	One supply cassette, 80-100 sheets
Media Outputs:	One receive tray, 50-sheet capacity
Media Sizes:	8" x 10" (203.2 x 254 mm), 14" x 17" (355.6 x 431.8 mm)(blue and clear), 11" x 14" (279.4 x 431.8 mm)(blue) DirectVista® Film, A (216 x 279 mm), A4 (210 x 297 mm), 14" x 17" (355.6 x 431.8 mm) DirectVista Grayscale Paper optional
Dmax:	≥3.0 with DirectVista Film
Archival:	≥20 years with DirectVista Film, under ANSI extended-term storage conditions
Media Supply:	All media is pre-packaged and factory sealed
Interfaces:	
Standard:	10/100/1,000 Base-T Ethernet (RJ-45), Serial Console
Network Protocols:	
Standard:	24 DICOM connections, FTP, LPR
Optional:	Windows network printing
Image Formats:	Standard: DICOM, TIFF, GIF, PCX, BMP, PGM, PNG, PPM, XWD, JPEG, SGI (RGB), Sun Raster, Targa
Optional:	PostScript™ compatibility
Image Quality:	Manual calibration
Image Control:	Gamma, Contrast, Polarity, Rotation, Scaling, Anti-aliasing
Sheet Control:	Density Adjustment (Dmax), Look-Up Tables (LUT), Image Warnings, Captions, Sheet Coverage, Border Fill, Crop Anchor
Sheet Formatting:	1:1-1:81; Variable Multi-Formatting (VMF™), Fixed Multi-Formatting (FMF™)
Control Panel:	Large, backlit LCD display, Status lights include Online, Alert, Fault, Active Power and Menu navigation buttons
Processor:	Intel
Memory:	2GB
Hard Disk:	SSD, 32GB (24GB available for spooling)
Removable Storage:	USB for software upgrades
Smart Card:	72 KB for storing configuration data
Power:	
Universal Input:	100 - 120/230V~ 50/60 Hz, 400W printing, 45W idle
Heat Emission:	Maximum 400W, 1,366 BTUs /hr. printing, 45W, 153 BTUs /hr. idle
Weight:	66 lbs. (30 kg.)
Engine Dimensions:	14.5" (37 cm) H, 20.5" (52 cm) W, 24" (61 cm) L
Environment:	
Operating Temperature:	15 - 30°C
Storage:	-22 - 50°C
Operating Humidity:	10 - 70% R.H. (non-condensing)
Regulatory:	Full medical device compliance including Class 2 FDA and Class I MDR 2017/745/ EU (CE), GMP/QSR, ISO 13485:2016/NS-EN ISO 13485:2016, Electrical Safety IEC 60601-1 Ed. 3.1 and EMC/EMI: FCC Class A and IEC 60601-1-2: Ed. 4 for Professional Healthcare Facilities



We bring the future into focus

17991 Englewood Drive  
Middleburg Heights, OH 44130 USA  
+1.440.243.1198  
+1.440.243.1334 Fax  
Email info@codonics.com  
www.codonics.com

900-881-002.01

# Digital Portable X-Ray Solution

with Dry Printing Bundle (DPX50-14G1-18)



# CODONICS

Defining Image Distribution

Call Codonics today at **+1.440.243.1198** or visit [www.codonics.com](http://www.codonics.com) for more information.

All registered and unregistered trademarks are the property of their respective owners. Specifications subject to change without notice. [www.codonics.com/ip/patents/](http://www.codonics.com/ip/patents/) Copyright © 2006-2023. Codonics Inc. 9/2023

# Digital Portable X-Ray Solution with Dry Printing Bundle

Codonics Digital Portable X-Ray Solution (DPX50-14G1-18) offers a complete mobile, all-in-one system for ambulatory and inpatient care areas. The x-ray detector uses 5.0 kW (100 kV/60 mA), 220V, and is secured on a portable cart with on-board storage for a laptop computer and wireless DR panel. This panel also fits conveniently into existing tables and/or a wall bucky to replace CR. The bundled Horizon Multi-media Imager completes the digital solution, delivering a variety of hardcopy media for diagnosis, consultation and file copy. The flexibility of this comprehensive, lightweight, mobile x-ray system is easy-to-use and provides a return-on-investment (ROI) with significant savings in full-time employee resources.

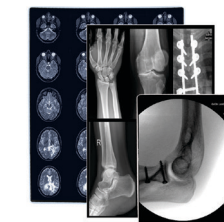


## Key Benefits

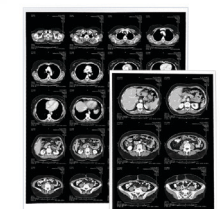
- Portable, compact and lightweight
- Seamlessly integrates with DR for fast, easy deployment
- Creates digital images in seconds, significantly reducing your existing exam times and greatly improving productivity
- Native mini PACS architecture enables full DICOM network connectivity
- Dry film/grayscale paper output for immediate diagnosis
- Highly affordable with low operational costs

## Key Components

- 5.0 kW, 200-240V, portable x-ray
- Portable cart (including on-board storage for laptop computer and DR panel)
- 1417 CSI Cesium Iodide (multiple configurations available including 1717 CSI Cesium Iodide)
- Horizon G1 (multiple configurations available including Horizon G2 or GS)
- Console software offering more than just image acquisition (computer purchased separately in local market)
- One year Return-to-Factory Warranty
- Media starter kit (60-1417; 20-810; 20-A4DVP)



**BLUE & CLEAR FILM**  
 14"x17" (355.6 x 431.8 mm)  
 11"x14" (279.4 x 431.8 mm)<sup>1</sup>  
 8"x10" (203.2 x 254 mm)



**GRAYSCALE PAPER**  
 14"x17" (355.6 x 431.8 mm)  
 8½"x11" (216 x 279 mm)  
 A4 (210 x 297 mm)

<sup>1</sup>Blue only.