

# Codonics Infinity Viewers

**Product Bulletin**

**No. 301**

**IMPORTANT:** Codonics has encountered MRI data from some manufacturers' systems for which the slice location information is not filled reliably. As a result, incorrect slice location information may be displayed by the Infinity® Study Manager and Advanced DICOM Web Viewers. This bulletin provides guidance for understanding this issue and obtaining a software update to correct the issue. Please contact Codonics Technical Support for additional assistance.

**IMPORTANT:** This bulletin should be reviewed carefully by all Infinity customers and resellers. Regardless of your findings concerning this issue, it is strongly recommended that all Infinity users and resellers obtain Infinity Operating Software version 1.4.0 or greater and immediately incorporate it in all installed systems and future system distributions.

**IMPORTANT:** As always, Codonics Infinity viewers are not intended for primary interpretation of medical images. However, due to the issue described in this bulletin, it is particularly important that Codonics Infinity Viewers in Infinity Operating Software version 1.3.1 and prior shall not be used for primary interpretation of medical images.

## Overview

This bulletin concerns viewing certain MRI data using Codonics Infinity Study Manager and Advanced DICOM Web Viewer in Infinity Operating Software version 1.3.1 and prior. The version of your Operating Software can be confirmed from the System Status screen by viewing the Software Version found in the Network/System information display.

**NOTE:** The Advanced DICOM Web Viewer is not available to users who did not purchase this option.

The Slice Location DICOM tag (0020,1041) is not always filled reliably by the manufacturer. Infinity viewers can display slice location information as a pre-formatted label: image plane orientation (SAG, COR, AX), direction with regards to the DICOM patient referential zero (L/R/A/P/H/F), and distance to the DICOM referential zero.

The potentially incorrect slice direction information is displayed in the Information text overlay located in the lower left corner of the image

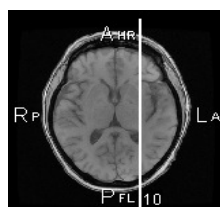
display. The slice Localizer may obscure this information and can be turned off by right-clicking on the image and selecting Localizer > Display to disable it.

## What Happens When the Error Occurs?

The viewer will report incorrect slice direction information in the Information text overlay (for example SAG L, COR A, AX H direction will be reported as SAG R, COR P or AX F respectively) as illustrated in the following Information text example in which slice direction is indicated as R - Right, which is incorrect:



If the Localizer is available for the series, the information will be in conflict with the information displayed in the Localizer as illustrated in the following example from the same image in which slice direction is indicated as L - Left, which is correct:



**NOTE:** The Localizer has correctly displayed slice direction information for all MRI data tested.

## Technical Support

If you have issues or questions concerning this bulletin, or would like information on specific manufacturer's equipment that may exhibit this issue, contact Codonics Technical Support between the hours of 8:30AM and 5:30PM ET (weekends and U.S. holidays excluded).

Phone: 440-243-1198  
Email: support@codonics.com  
Website: www.codonics.com

## Recommended Actions

Users and resellers of Infinity systems utilizing Operating Software version 1.3.1 and prior should refer to the following table for recommended actions. Infinity viewers include both the Study Manager and the Advanced DICOM Web Viewer. Users who have not purchased the Advanced DICOM Web Viewer will not have access to this viewer.

	Action	Infinity User	Infinity Reseller
1	Do not use Infinity Study Manager or Advanced DICOM Web Viewer for primary interpretation.	X	X
2	Do not expect slice location <b>Information text</b> to be accurate.	X	X
3	Compare slice location direction <b>Information text</b> to the <b>Localizer</b> (if present) to verify correct display of this information.	X	
4	Compare slice location direction and distance <b>Information text</b> to the modality workstation or console to verify correct display of this information.	X	
5	If the result of either actions 3 or 4 are not consistent, notify all potential users of this viewer of this issue and send them this bulletin by mail, email, or fax.	X	
6	Obtain updated Operating Software.	X	X

*Get it all with just one call*  
**1-800-444-1198**

All registered and unregistered trademarks are the property of their respective owners. Specifications subject to change without notice.

Copyright © 2010 Codonics, Inc. Printed in the U.S.A. Part No. 903-300-001.03.



17991 Englewood Drive  
Middleburg Heights, OH 44130 USA  
(440) 243-1198  
(440) 243-1334 Fax  
Email info@codonics.com  
www.codonics.com

Codonics Limited KK  
New Shibaura Bldg. F1  
1-3-11, Shibaura  
Minato-ku, Tokyo, 105-0023 JAPAN  
Phone: 81-3-5730-2297  
Fax: 81-3-5730-2295