

# Windows NT 4.0 Driver Installation

## Overview

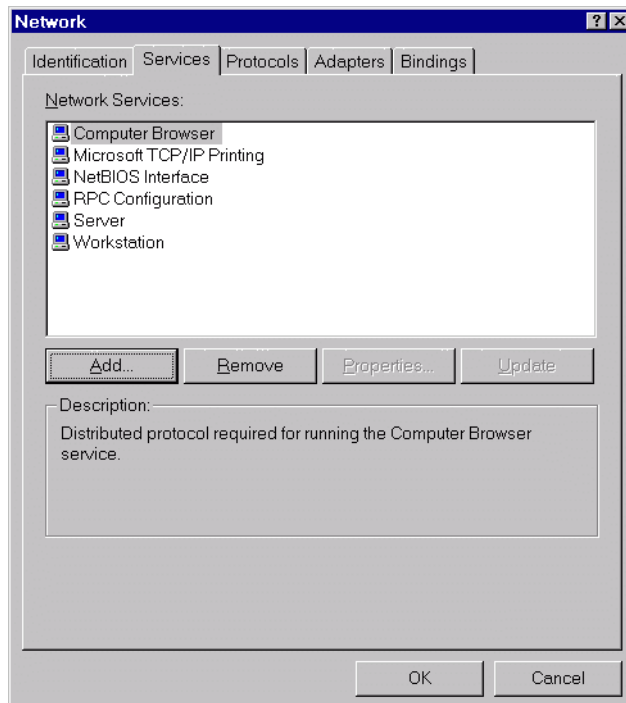
The Codonics PostScript Driver for Windows NT 4.0 allows users to print directly from Windows applications to Codonics printers. These instructions include installing LPR print services for machines printing over a TCP-IP network. LPR print services installation requires the NT distribution files, found on the NT 4.0 CD-ROM. Installation should be performed by a qualified user or system administrator. A PostScript key must be installed on the printer in order to print with the NT 4.0 driver.

## Printing Options

Files generated using the Windows NT 4.0 PostScript driver may be printed directly using Microsoft TCP/IP Print Services (LPR), or the parallel port. They may also be transferred using FTP or ImageWeb.

## Network Printing Installation

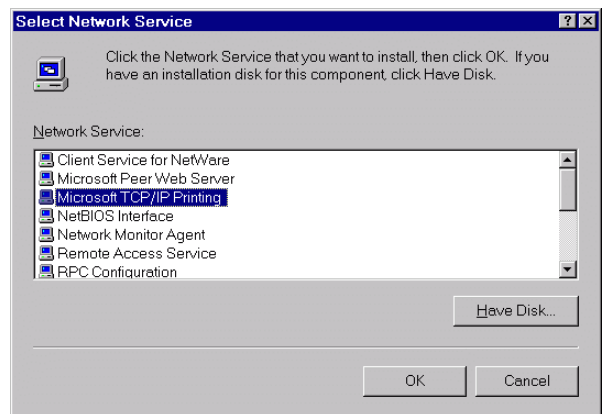
There are two parts to installing the printer on a network: installing *Microsoft TCP/IP Printing Services*, and adding the printer through the *Add Printer Wizard*. If the printer will be used over the parallel port, please skip to the section of this document titled *Parallel Port Installation*. The parallel port and the network may be used simultaneously to send prints.



## LPR Print Services

Windows NT does include LPR printing, but it is not part of the standard installation. To install LPR printing, please do the following. The workstation will have to be rebooted at the end of this process:

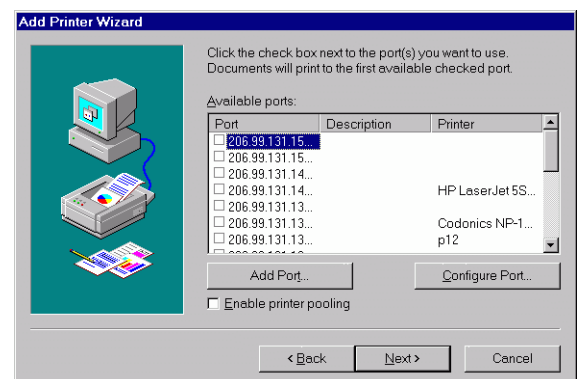
1. Start Windows NT.
2. Click on **Start, Settings, Control Panel**.
3. Click on **Network**.
4. Click on the **Services** tab. If **Microsoft TCP/IP Printing** displays in the list, click **Cancel**; LPR is already installed. If it does not, click **Add**.



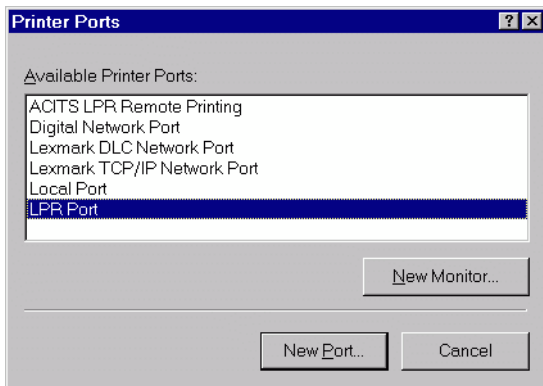
5. Click on **Microsoft TCP/IP Printing**, and click **OK**.
6. Click **OK** again, and reboot the computer. After rebooting, LPR will be installed.

## Network Printer Installation

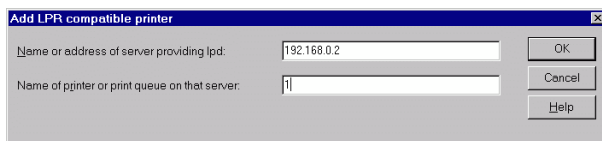
1. Click **Start, Settings, Printers**.
2. Select **Add Printer** from the Printers window, starting the *Add Printer Wizard*.
3. Select **My Computer**, and click **<Next>**.



4. Select Add Port.



5. From the menu, select **LPR Port**, and click **New Port**.



6. In **Name or address of server providing lpd**, enter the **IP address** of the printer. In **Name of printer or print queue on that server**, enter the number **1**. Do not attempt to name the printer in this field.
7. Click **OK**, then **Close**, then **<Next>**. If an error is returned, check the IP address and queue name given to the printer, and the network information from the printer's front panel.
8. The next screen begins the driver installation sequence. Select **Have Disk**, and give the full path to the driver files, including the driver letter. If the files were downloaded from the Codonics FTP site, they will have to be unzipped prior to installation. If using the driver floppy, the path should look something like A:\winnt40. Codonics NP-1600, and possibly Codonics NP-1660, should appear in the window. Click **<Next>**.
9. Give the printer a name, or choose **<Next>** to keep the default name, "**Codonics NP-1600**".
10. If this is a print server installation, click **Shared** and give the printer a share name. If this is not a print server installation, click **Unshared**.
11. Click **<Next>** and print the Windows test page.

*Parallel Port Installation*

When printing to the parallel port from Windows it is necessary to change some printer settings.

*Setting the Parallel Port Mode*

Use the following front panel key sequences to select the parallel port operating mode. When an **<Up-arrow>** or **<Down-arrow>** is indicated, press the key repeatedly until the correct response is showing on the LCD. Start from the **READY** display.

<u>Use Key</u>	<u>Until LCD Displays</u>
<b>&lt;Setup&gt;</b>	SETUP: NETWORK
<b>&lt;Down-arrow&gt;</b>	SETUP: PARALLEL
<b>&lt;Setup&gt;</b>	PAR: MODE
<b>&lt;Setup&gt;</b>	<i>The LCD will display the current active mode with an asterisk (*) in front of the mode name.</i>
<b>&lt;Up-arrow&gt; or &lt;Down-arrow&gt;</b>	<i>Until DATA shows on the LCD</i>
<b>&lt;Setup&gt;</b>	PAR: MODE

*The last mode displayed on the LCD is now the active mode. If the <Setup> key is pressed again, the active mode will be displayed with an asterisk (\*) in front of the mode name. Press the <Setup> key to return to the PAR: MODE menu.*

<b>&lt;Down-arrow&gt;</b>	PAR: DEVICE
<b>&lt;Setup&gt;</b>	DEVICE: 2
<b>&lt;Down-arrow&gt;</b>	DEVICE: 1
<b>&lt;Setup&gt;</b>	PAR: DEVICE

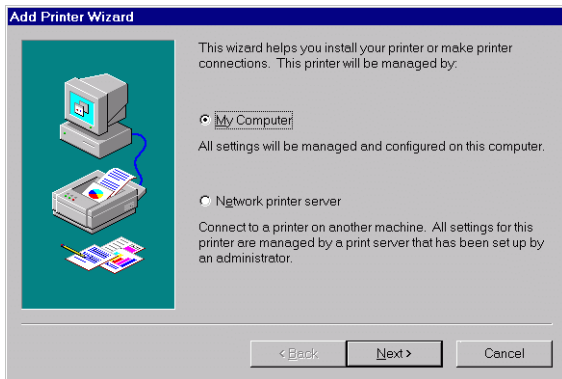
*To exit the setup mode and return the printer to the READY state, use the following sequence:*

<b>&lt;Up-arrow&gt;</b>	PAR: EXIT
<b>&lt;Setup&gt;</b>	READY

*Driver Installation*

1. Click **Start, Settings, Printers**.
2. Select **Add Printer** from the printers pop-up window, which will start the *Add Printer Wizard*.

3. Select **My Computer**, and click **<Next>**.



4. Scroll through the list of ports, and check the appropriate LPT port, usually **LPT 1**.

5. The next screen begins the driver installation sequence. Select **Have Disk**, and give the full path to the driver files, including the drive letter. If the files were downloaded from the Codonics FTP site, they will have to be unzipped prior to installation. If files are on the driver floppy, the path should look something like A:\winnt40\**Codonics NP-1600** and possibly **Codonics NP-1660** should appear in the window. Click **<Next>**.
6. Naming the printer: If this is a print server installation, it is advisable to keep the printer's name to 8 characters or less. Click **<Next>**.
7. Click **Shared** if this is a print server installation, and give the printer a share name. If this is not a print server installation, click **Unshared**.
8. Click **<Next>**. We recommend that you do choose to print the test image.

Copyright ©1999 by Codonics, Inc. Codonics, Codonics logo, NP-1600 and NP-1660 are trademarks of Codonics, Inc. All other registered and unregistered trademarks are the property of their respective owners. Specifications subject to change without notice. Printed in U.S.A. Patents Pending. Part number 901-030-001 Rev. 073099

---

*Get it all with just one call*  
**1-800-444-1198**



**CODONICS**

*We bring the future into focus*

17991 Englewood Drive  
Middleburg Heights, OH 44130 USA  
440/243-1198  
440/243-1334 Fax  
Email [info@codonics.com](mailto:info@codonics.com)  
<http://www.codonics.com/>