

# Codonics Virtua Clarity Viewers

**Product  
Bulletin**

**No. 205**

**IMPORTANT:** Codonics has encountered MRI data from some manufacturers' systems for which the slice location information is not filled reliably. As a result, incorrect slice location information may be displayed by the Codonics Clarity® Viewer. This bulletin provides guidance for understanding this issue and obtaining a software update to correct the issue. Please contact Codonics Technical Support for additional assistance.

**IMPORTANT:** This bulletin should be reviewed carefully by all Virtua® customers and resellers. Regardless of your findings concerning this issue, it is strongly recommended that all Virtua users and resellers obtain Clarity Viewer and/or Clarity 3D/Fusion Viewer version 6.1 SP 10 or greater and immediately incorporate it in all future disc and system distributions.

**IMPORTANT:** As always, Codonics Clarity Viewers are not intended for primary interpretation of medical images. However, due to the issue described in this bulletin, it is particularly important that Codonics Clarity Viewers versions 6.1 SP 9 and prior shall not be used for primary interpretation of medical images.

## Overview

This bulletin concerns viewing certain MRI data using Codonics Clarity Viewer and Codonics Clarity 3D/Fusion Viewer version 6.1 SP 9 and prior. The version of your Clarity Viewer can be confirmed by selecting Help > About from the viewer and noting the product version presented in the top box of this window.

The Slice Location DICOM tag (0020,1041) is not always filled reliably by the manufacturer. Clarity can display slice location information as a pre-formatted label: image plane orientation (SAG, COR, AX), direction with regards to the DICOM patient referential zero (L/R/A/P/H/F), and distance to the DICOM referential zero.

The potentially incorrect slice direction information is displayed in the Information text overlay located in the lower left corner of the image display. The slice Localizer may obscure this information and can be turned off by right-clicking on the image and selecting Localizer > Display to disable it.

## Recommended Actions

Users, Resellers and Recipients of Clarity Viewers version 6.1 SP 9 and prior should refer to the following table for recommended actions:

	Action	Virtua User	Virtua Reseller	Disc Recipient
1	Do not use Clarity Viewers for primary interpretation.	X	X	X
2	Do not expect slice location <b>Information text</b> to be accurate.	X		X
3	Compare slice location direction <b>Information text</b> to the <b>Localizer</b> (if present) to verify correct display of this information.	X		X
4	Compare slice location direction and distance <b>Information text</b> to the modality workstation or console to verify correct display of this information.	X		
5	If the result of step 3 and or 4 are not consistent, notify all potential recipients of this viewer by sending them this bulletin by mail, email, or fax.	X		
6	Contact the disc provider for information on slice location accuracy for MRI studies received with Clarity Viewers version 6.1 SP 9 and prior.			X
7	Obtain updated viewer software.	X	X	

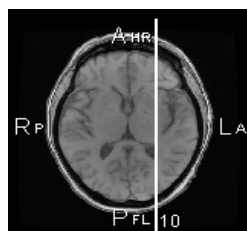
## What Happens When the Error Occurs?

The viewer will report incorrect slice direction information in the Information text overlay (e.g., SAG L, COR A, AX H direction will be reported as SAG R, COR P or AX F respectively) as illustrated in the following Information text example where slice direction is indicated as R - Right, which is incorrect:

ET: 1  
TR: 375.0  
TE: 3.6  
4.0 mm / SAG R 30.9 mm  
Ww 3385, Wc 1692  
Im 10/33, #10

Direction  
Distance

If the Localizer is available for the series, the information will be in conflict with the information displayed in the Localizer as illustrated in the following example from the same image for which slice direction is indicated as L - Left, which is correct:



**NOTE:** The Localizer has correctly displayed slice direction information for all MRI data tested.

## Technical Support

If you have issues or questions concerning this bulletin, or would like information on specific manufacturer's equipment that may exhibit this issue, contact Codonics Technical Support between the hours of 8:30AM and 5:30PM ET (weekends and U.S. holidays excluded).

Phone: 440-243-1198  
Email: support@codonics.com  
Website: www.codonics.com

*Get it all with just one call*  
**1-800-444-1198**

All registered and unregistered trademarks are the property of their respective owners. Specifications subject to change without notice.

Copyright © 2010 Codonics, Inc. Printed in the U.S.A. Part No. 903-208-001.16.



17991 Englewood Drive  
Middleburg Heights, OH 44130 USA  
(440) 243-1198  
(440) 243-1334 Fax  
Email info@codonics.com  
www.codonics.com

Codonics Limited KK  
New Shibaura Bldg. F1  
1-3-11, Shibaura  
Minato-ku, Tokyo, 105-0023 JAPAN  
Phone: 81-3-5730-2297  
Fax: 81-3-5730-2295